



# PARKS ON PALMER RANCH



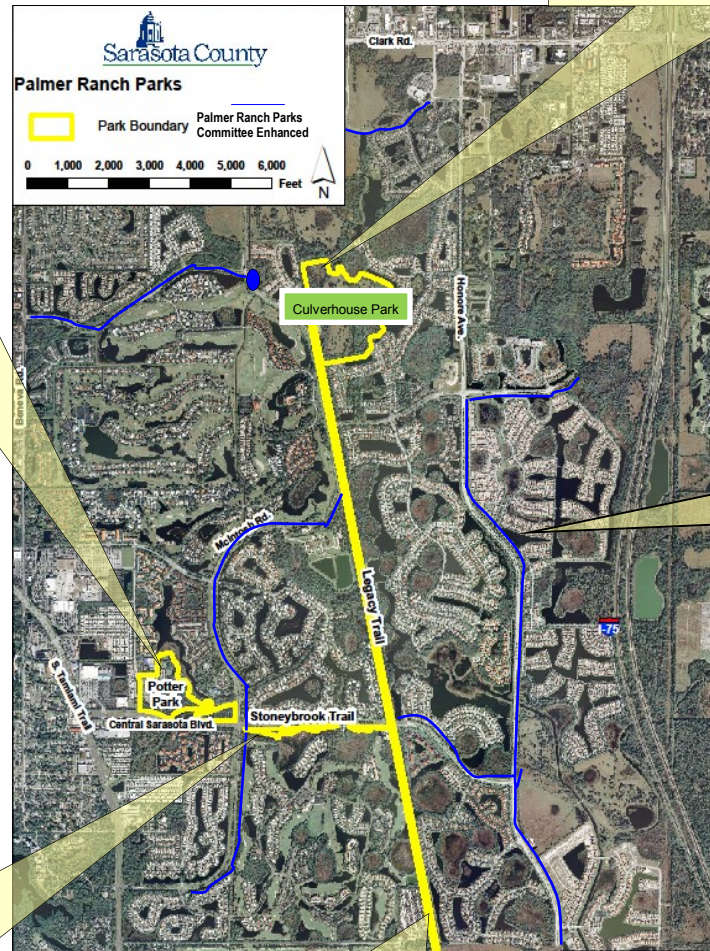
## CULVERHOUSE NATURE PARK AND COMMUNITY GARDEN

Sarasota County accepted the donation of a conservation easement from Palmer Ranch Holdings. The conservation easement of Parcel B-10 is an 82-acre site located adjacent to the northern extent of the Legacy Trail. The conservation easement was donated for the purpose of preservation and protection of the property, allowing for outdoor recreation and educational opportunities consistent with the conservation purposes. Permitted uses include recreational improvements on a portion of the property and development of "Nature Park Facilities." Other permitted uses include agricultural uses, access roads, trails and parking areas.

### POTTER PARK

Potter Park is a beautiful 37-acre neighborhood park conveniently located on Palmer Ranch. Potter Park is a neighbor to the Evalyn Sadlier Jones YMCA and shares a unique partnership in that a variety of recreational opportunities are available in one location.

- Picnic pavilion with grill
- Large gazebo with grill
- Open-area picnic tables
- Shaded playground
- Outdoor basketball courts
- 4 lighted tennis courts
- Open play field
- Restrooms
- Nature & Recreation trails



Blue line trails are Palmer Ranch Parks Committee recommended enhancements, park benches on concrete pads with shade trees.



### STONEYBROOK NATURE TRAIL

A one mile, eight foot wide, concrete trail that meanders through a natural Florida setting running parallel to Central Sarasota Parkway. The benches are great for bird watching plus easy to read, interpretive and informational signage.



### LEGACY TRAIL

The Legacy Trail is the largest public recreation project ever constructed in the area. Totalling more than 10 miles in length the trail runs from just south of the city of Sarasota to Venice following the former CSX railroad corridor.

The Legacy Trail is the backbone of network of trails planned in Sarasota County. The trail head, of this linear park which bisects Palmer Ranch, is located off McIntosh Road. Legacy Trail is open from dawn to dusk with the rules for using the trail posted at various locations.



# PALMER RANCH

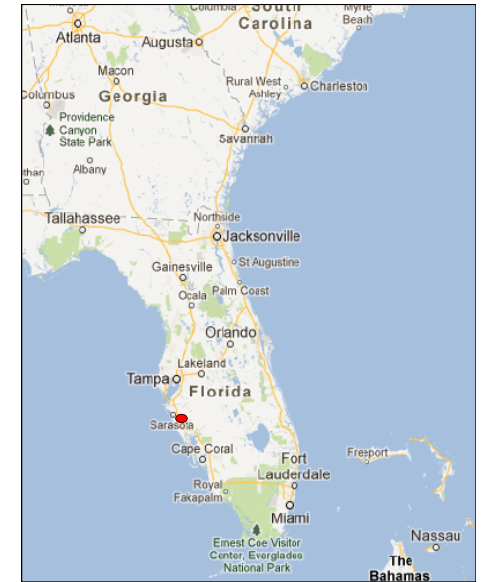
Palmer Ranch is a master-planned community in Sarasota, Florida. It includes a network of neighborhoods, shopping centers, retail establishments, and recreational properties. The approximately 6,960± acres are located in mid-Sarasota County bordered by Clark Road, Honore Avenue, Beneva Road, and Tamiami Trail. The location provides easy accessibility to top-ranked schools, the interstate, airports, shopping, entertainment venues, sports facilities, golf courses, restaurants, and renowned beaches.

This property was at one time land owned and managed by Mrs. Bertha Potter Palmer in the early 1900's. Historical information is available in the on-site library housed at the offices of the Palmer Ranch Master Property Owners Association.

Today, the community of Palmer Ranch presents residents with a wide range of

lifestyle choices, from maintenance-free villas and condominiums to beautiful single family homes. The park like setting of the community surrounding the association neighborhoods is maintained by the Palmer Ranch Master Property Owners Association.

The Florida outdoors lifestyle is promoted by a web of sidewalks with park benches woven through the communities of Palmer Ranch allowing opportunities for walking, running, bicycling, birding, and other nature studies. In addition, there are several Sarasota County Parks: the Legacy Trail, a 10 mile linear park trail great for bikes or jogging; Potter Park; Stoneybrook Nature Trail; and the newest park, Culverhouse Nature Park and Community Garden which opened in June 2013. (See page 4 for park locations and additional information.)



Palmer Ranch in Sarasota, Florida

## FUN FACTS

- ◇ Palmer Ranch Master Development Order—6,960 acres
- ◇ 7 Entry Features (community signs, flagpole, lush landscape & lighting)
- ◇ 24 Wayfinding Signs authorized by special Sarasota County Ordinance
- ◇ 27 acres of St Augustine grass
- ◇ 105 acres of Bahia grass
- ◇ 6.25 acres are mowed within Restoration Areas unseen from the main public roadways
- ◇ 3,500 annuals are changed out 3 times per year
- ◇ Octoberfest maintenance includes: trimming of 914 Cabbage Palms; spreading of 30,000 pounds of winter rye seed; 6,000 bags of mini pine bark mulch.
- ◇ Part of Little Sarasota Bay Watershed
- ◇ Includes 4 drain basins: South Creek, Catfish Creek, North Creek and Eligraw Bayou.

### Sign Up For Our Newsletter

Do you want to hear about the news on Palmer Ranch first hand? If so, simply visit our website: [www.PalmerRanch.net](http://www.PalmerRanch.net). At the bottom of the home page, simply click on 'Sign Up For Our Newsletter.' You'll then be asked to provide your email address and first name. It's that easy!

# Neighborhoods of Palmer Ranch

## Residential Communities

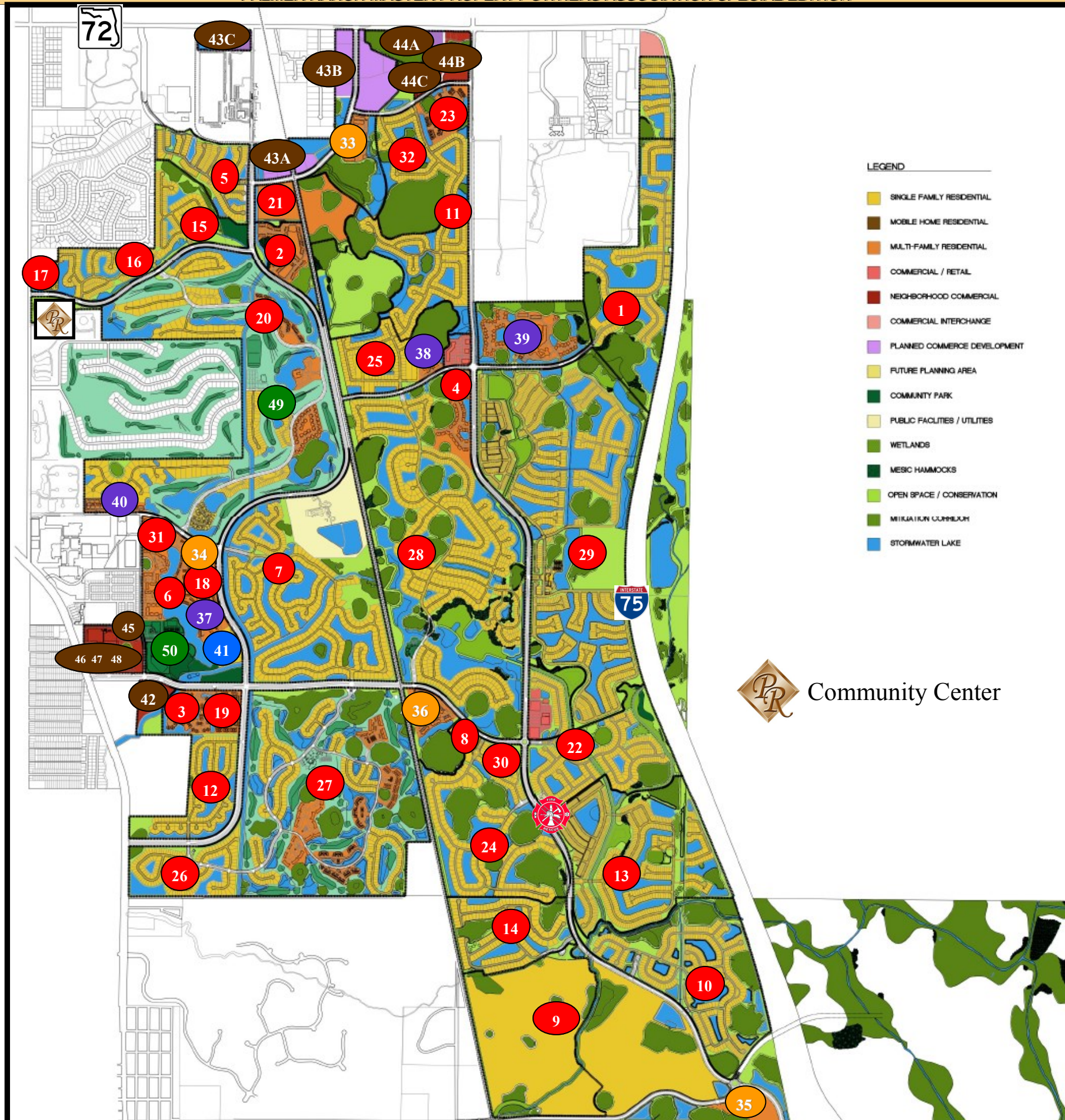
- (1) Arbor Lakes
- (2) Arielle
- (3) Bella Villino
- (4) Botanica
- (5) Cobblestone
- (6) Crocker's Lake
- (7) Deer Creek
- (8) Enclave at Silver Oak
- (9) Esplanade
- (10) Hammock Preserve
- (11) Hamptons
- (12) Huntington Pointe
- (13) Isles of Sarasota
- (14) Legacy Estates
- (15) Marbella
- (16) Mira Lago
- (17) Palisades
- (18) Pinestone
- (19) Plaza de Flores
- (20) Prestancia
- (21) Promenade
- (22) Sandhill Preserve
- (23) Serenade
- (24) Silver Oak
- (25) Stonebridge
- (26) Stoneybrook Estates
- (27) Stoneybrook Golf & Country Club
- (28) Turtle Rock
- (29) VillageWalk
- (30) Vineyards of Silver Oak
- (31) Vintage Grand
- (32) Wellington Chase

## Apartment Communities

- (33) Anson
- (34) Arium
- (35) Sage
- (36) Saratoga Place

## Assisted Living

- (37) Brookdale Deer Creek
- (38) Brookdale Palmer Ranch
- (39) The Glenridge
- (40) Heron Club



# Retail & Commercial Church & Recreation

## Church

- (41) Covenant Life Church

## Retail/Commercial

- (42) Lowe's Home Centers
- (43) Palmer Park of Commerce
  - (43a) Culverhouse Ltd. Part. Pool Water Products R.F. Carlson Sawyer Loop Partners United States Post Office
  - (43b) Auto Auction Mercedes-Benz Sarasota Tax Collector
  - (43c) Advance Auto Culver's Goodwill McDonalds Starbucks Synovus Bank Tire Choice Tires Plus
- (44) Palmer Park Plaza
  - (44a) Audi Sarasota Infiniti of Sarasota
  - (44b) CVS Norman's Liquors
  - (44c) Publix
- (45) Palmer Ranch Exec. Office Ctr.
- (46) Plaza at Palmer Ranch
- (47) Potter Park Medical Center
- (48) Target

## Recreational

- (49) TPC Prestancia
- (50) YMCA

- Fire Station # 15