



## ON THE RANCH NEWSLETTER – AUGUST 2023

[WWW.PALMERRANCH.NET](http://WWW.PALMERRANCH.NET)

---

### News You Can Use



#### **ARTISTS OF PALMER RANCH MEETING – MONDAY, AUGUST 7<sup>TH</sup>**

Beat the heat! Show off your cool artwork! If you draw, paint, sculpt or simply have an interest in the visual arts, please join the Artists of Palmer Ranch at their next meeting on **Monday, August 7<sup>th</sup> at 10:30 am**, at Gulf Gate Library, 7112 Curtiss Ave. Any Palmer Ranch resident is very welcome. If you like, bring your latest masterpiece, they'd love to see it!

*Featured Artist: Barbara Swan, "Street Scene in Italy"*

#### **GREEN TEAM EVENT AT THE GLENRIDGE - OPEN TO PALMER RANCH RESIDENTS**

The members of the Green Team at The Glenridge on Palmer Ranch invite you to join them on **Tuesday, September 12 at 10:30am** in The Glenridge Theatre, located at 7333 Scotland Way, for a presentation by Jon Thaxton, Senior Vice-President for Community Leadership with Gulf Coast Foundation. You'll learn about the work that is being done with policymakers to build resilience into our natural and built environments to create cleaner and healthier waterways. This will lead to fewer and less intense red tide outbreaks and reduced beach closures. RSVP is not necessary and Glenridge gate security will provide visitors with directions to parking and to the theatre. For additional information please visit the Green Team website at [www.glenridgegreenteam.org](http://www.glenridgegreenteam.org).

#### **SARASOTA COUNTY ALL HAZARDS DISASTER PLANNING GUIDE**

Sarasota County Planning and Development Services has developed an All-Hazards Disaster Planning Guide to assist residents in planning for a disaster. Click on the following link to download a copy of the planning guide. <https://www.scgov.net/home/showpublisheddocument/50927/637879616023900000>.

#### **SOLAR UNITED NEIGHBORS – SARASOTA SOLAR CO-OP NOW OPEN**

**WHO:** Solar United Neighbors (<https://www.solarunitedneighbors.org>) is a nonprofit that has successfully organized hundreds of solar co-ops around the country.

**WHAT:** A solar co-op is a group of homeowners who join to learn about solar power and its benefits for your home, business, and community. Members save time, and stress going solar together and receive a custom competitive quote for a quality system at co-op pricing. Join to get education and support from the experts at Solar United Neighbors and decades of value and savings with clean rooftop energy in your neighborhood.

**WHEN:** The Sarasota 2023 Solar Co-op is open now and free to join through November with no obligation to purchase a system. Don't wait to start saving with sunshine. Join today at <https://www.solarunitedneighbors.org>.



## ON THE RANCH NEWSLETTER – AUGUST 2023

[WWW.PALMERRANCH.NET](http://WWW.PALMERRANCH.NET)

---

### **Everything You Need to Know About Palmer Ranch**

There are many property types on Palmer Ranch. For purposes of classification and representation to the Master Association they are: Residential, Commercial/Industrial, and Recreational.

What makes up the Board of Trustees of the Master Association? There are fifteen (15) Board Members; ten are elected from Residential Members, three from Commercial-Industrial and two from Recreational Members. The Declarant has exercised its option by appointing a sixteenth member to the Board.

#### **2023 PALMER RANCH MASTER PROPERTY OWNER'S ASSOCIATION - BOARD OF TRUSTEES / OFFICERS:**

President / Residential Trustee: Leatrice (Lee) Katz - VillageWalk

President Elect / Residential Trustee: Richard (Dick) Beitel – Stoneybrook Golf & Country Club

Vice-President / Residential Trustee: Roger Stephenson - VillageWalk

Secretary / Residential Trustee: Carol Auricchio - Mira Lago

Treasurer / Residential Trustee: Cynthia Dopjera – Stoneybrook Golf & Country Club

Recreational Trustee: Elizabeth Miller – TPC Prestancia

Recreational Trustee: Lisa Meskil – Core SRQ

Commercial / Industrial Trustee: Christian Trani – The Shoppes at Palmer Ranch

Commercial / Industrial Trustee: Steve Kern – Mercedes Benz of Sarasota

Commercial / Industrial Trustee: Vacant

Residential Trustee: Charles Reith – Mira Lago

Residential Trustee: Chris Meyer - Huntington Pointe

Residential Trustee: Dennis Hudson – Hammock Preserve

Residential Trustee: Martha Sherman – Sandhill Preserve

Residential Trustee: Robert (Bob) Swan – Prestancia

Declarant Trustee: Tami Lansdell – Palmer Ranch Holdings, LTD.



## ON THE RANCH NEWSLETTER – AUGUST 2023

[WWW.PALMERRANCH.NET](http://WWW.PALMERRANCH.NET)

---

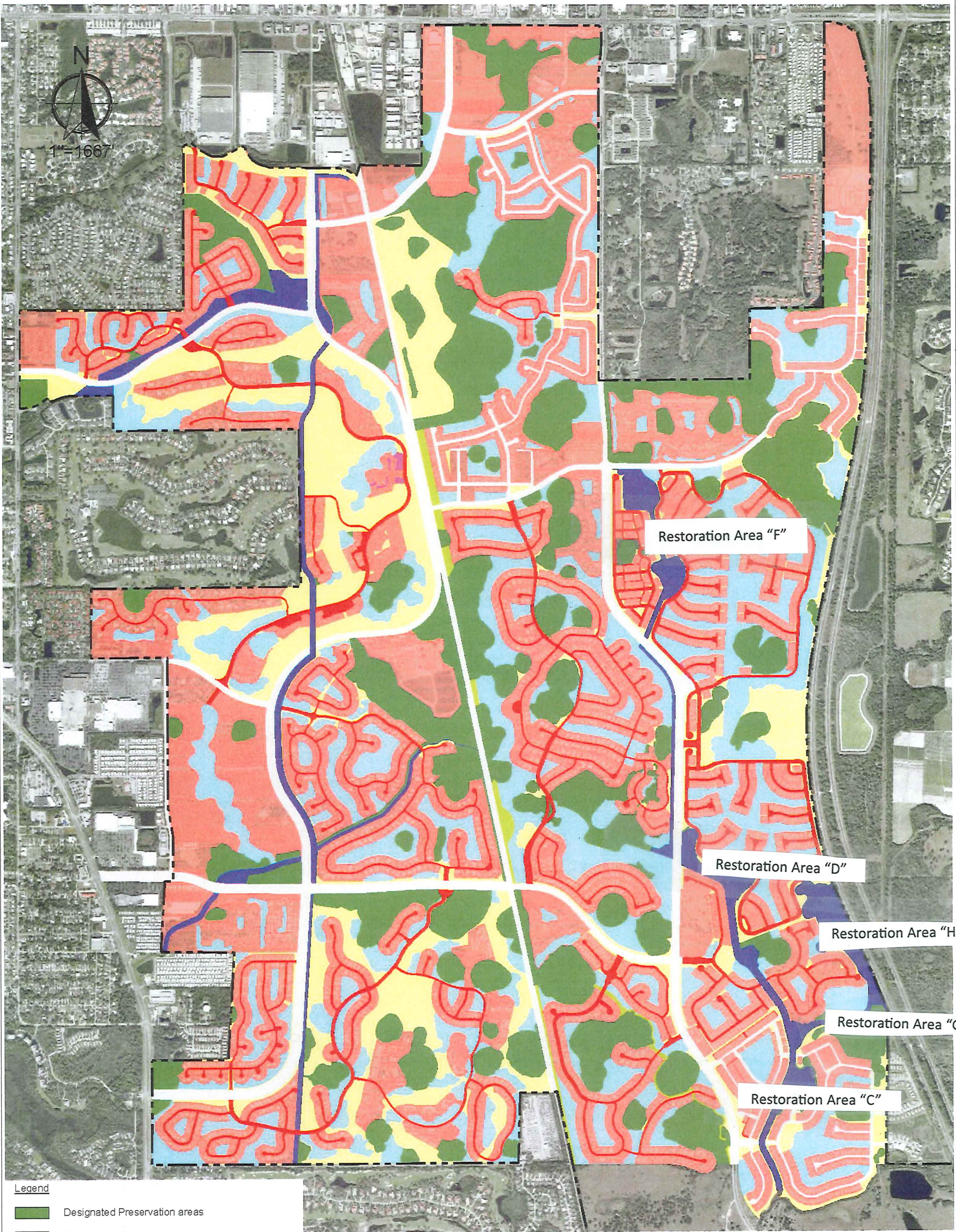
### **Sue's Grounds Corner**

My article in July's Newsletter detailed the silt removal process that the Palmer Ranch Master Association (PRMA) completed. Because we received a couple of comments asking for more details about where these areas are, I'm attaching the Palmer Ranch map. PRMA is responsible for the maintenance of several canal systems within the South Creek Basin, which flows to the east and west of Honore Avenue. The maintenance includes the removal of sediments from the flow line of the canals, which ensures that the canals will function properly during the rainy season and especially during hurricane season. Palmer Ranch was designed to accommodate large flooding events (10-inches in 24hrs – minimum). However, the canals must be periodically cleaned to ensure that flood waters can be moved away from the ranch efficiently and effectively.

PRMA contracted with Stantec Consulting Services to evaluate the condition and sediment depth of South Creek. Their stormwater engineers determined the areas that needed attention were within Restoration Areas "F", "H" and "C".

What is a Restoration Area you ask? Stay tuned for our September newsletter to find out more.....





Legend

- Designated Preservation areas
- Designated Conservation areas
- Designated Private Stormwater management areas
- Designated Public Drainage areas
- Designated Common space areas
- Designated Private roadway areas
- Designated Public roadway areas
- Designated Development (i.e. lots) areas

Palmer Ranch Master Association  
Community Watershed Management Program  
Map Layers

