



Contact Us:

5589 Marquesas Circle, #201
Sarasota, FL 34233

Telephone: 941-922-3866

Fax: 941-922-1581

Email: info@palmer ranch.net

Website: www.PalmerRanch.net

On the Ranch Newsletter July 2025

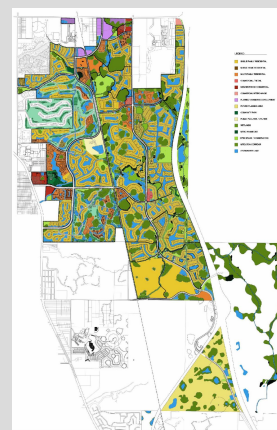
INSIDE THIS ISSUE

- All About Palmer Ranch
- Palmer Ranch Area Map
- News You Can Use
- Sue's Grounds Corner
- Images from Palmer Ranch
- Local Happenings



Click [Here](#) to read all about Palmer Ranch.

Click [Here](#) for a Palmer Ranch Community Map.



Communication from the Master Association to our Members



Holiday Hours for The Master Association

The Master Association office will be closed on **Friday, July 4th**, in honor of Independence Day, reopening Monday, July 7th at 8:00 am.



Palmer Ranch Recreation Areas

The local parks, trails, and recreational facilities contribute to the active lifestyle and family-friendly communities that make up Palmer Ranch. Listed below are some of the areas and amenities.

CULVERHOUSE NATURE PARK AND COMMUNITY GARDEN Situated on McIntosh Road, just south of Palmer Ranch Parkway West, is the 82-acre nature park and community garden. Not only does the park provide parking for Legacy Trail users, but there are also nature trails, picnic areas as well as a restroom facility. Please Note: Dogs are allowed but must remain on leash.

LEGACY TRAIL The Legacy Trail is the largest public recreation project ever constructed in the area. At 18.5 miles in length, the Trail runs from Sarasota to Venice and is the backbone of a network of trails planned in Sarasota County. The Bee Ridge Road Legacy Trail overpass is now open, and the Clark Road Legacy Trail overpass is scheduled to open this summer. Legacy Trail is open from dawn to dusk with the rules for using the Trail posted at various locations. Dogs are allowed but must remain on leash.

POTTER PARK Potter Park is a beautiful 37-acre neighborhood park conveniently located on Palmer Ranch. Potter Park is a neighbor to the Palmer Ranch YMCA and shares a unique partnership in that a variety of recreational opportunities are available in one location. Amenities include: a picnic pavilion with grill, large gazebo with grill, open-area picnic tables, shaded playground, outdoor basketball courts, 4 lighted tennis courts, pickleball, open play field, as well as restrooms and nature trails. Dogs are allowed but must remain on leash.

STONEBROOK NATURE TRAIL A one mile, eight-foot-wide, concrete trail that meanders through a natural Florida setting running parallel to Central Sarasota Parkway. The benches are great for bird watching plus easy to read, interpretive and informational signage. Dogs are allowed but must remain on leash.

Click [Here](#) for an expanded list of area parks with Hours, Address, Acres, if Dog Friendly, and Amenities.

History of the Culverhouse Community Garden ~Photos courtesy of Garden members~



Planning for the Culverhouse Community Garden extends back to 2009.

On July 26, 2011, 82 pristine acres on Palmer Ranch was gifted from the Culverhouse's to Sarasota County for the purpose of creating a community garden and nature park.

A great deal of work went into constructing the garden. Much of the work was done by hand.

For more information on the garden and its history, visit www.CulverhouseGarden.org.

2009 - Planning the garden: Catherine Dente, Leila Frangie, Eliza Culverhouse, and Marcy Freeman.



May 2012, Garden member David Consbruck is seen assembling the maze of irrigation pipes.



All of the pipes were
trenched by hand -
no power equipment
was allowed!



March 2012, solar
panels were installed
by Brilliant Harvest.



During its 13-year history, Culverhouse Community Garden has weathered and survived many tropical storms and hurricanes.



Communication To and From Sarasota County Government



311 Connect

Sarasota County's 311 Connect app makes it easy to report concerns like standing water, blocked drains or overgrown ditches right from your phone. You can also use the app to explore local parks and beaches, find a nearby library, pay

your utility bill and more.

It's a one-stop resource for staying connected to county services. Download 311Connect and help keep your neighborhood flowing smoothly, rain or shine! ☔. This tool is available for Sarasota County residents to report **Non-Emergency** service requests.

Visit sarasotacountyfl.qscend.com/311 to sign up for 311 Connect.



Alert Sarasota County

Alert Sarasota County is Sarasota County's mass notification system for rapid emergency updates. This service sends alerts via landline, cellphone, text message,

email or mobile app push notification depending on which contact information is provided and the user's preference.

Opt-in for alert subscriptions offered by the county or your local municipality to receive alerts on events such as:

- Emergency public health and safety
- Severe weather
- Major road closures
- Boil water advisories
- Mosquito control

Visit www.alertsarasotacounty.com to sign up for important notifications from Sarasota County.

Notice of Public Hearing

Date: Wednesday, July 9, 2025

Time: 9:00 am, or as soon thereafter as possible

Location: Sarasota County Administration Center, Commission Chamber, 1660 Ringling Blvd., Sarasota, Florida

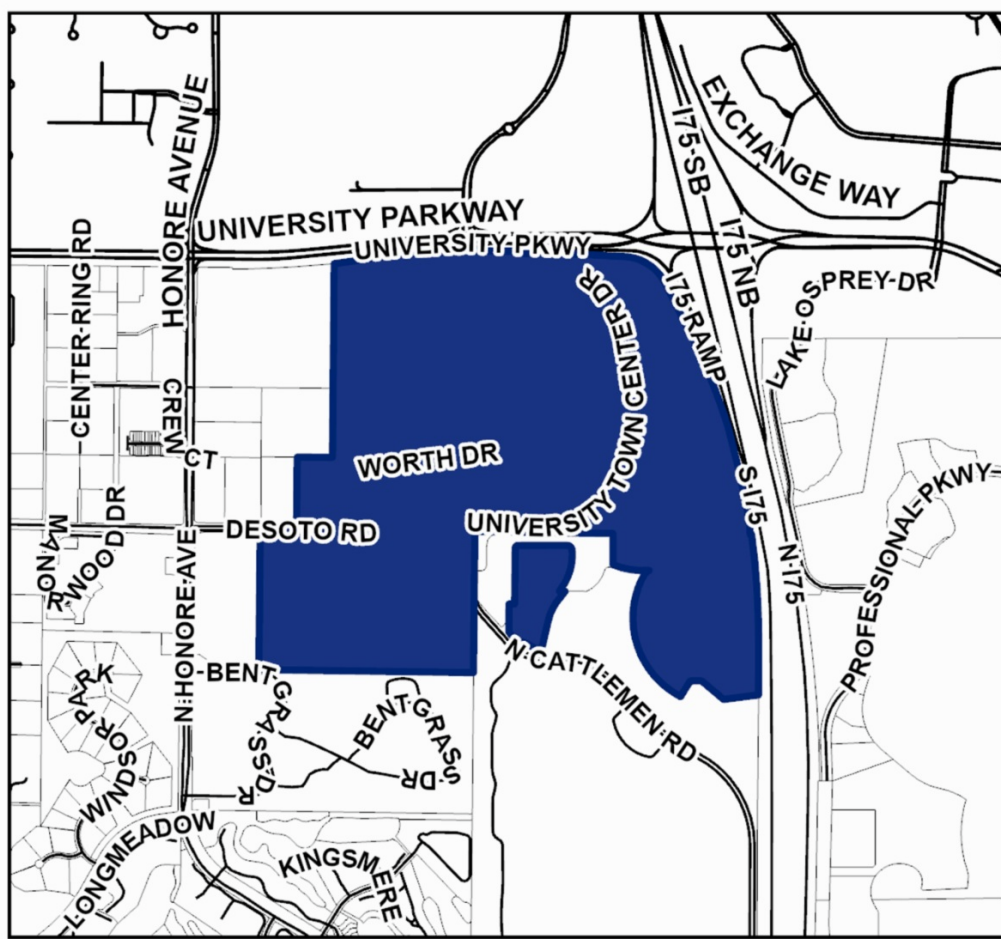
This project is not on Palmer Ranch but may be of interest to Palmer Ranch residents.

Notice of Public Hearing Regarding Proposed Special Exception – SE 1892

Click [Here](#) to read the notice as listed on the Sarasota County website.

The Sarasota County Planning Commission will hold a Public Hearing to consider the Special Exception Petition No. 1892 to allow free-standing multi-family residential in a mixed-use development and to increase the maximum height from 85 feet to 110 feet in the CG (Commercial General) zone district.

This petition relates to the property located in the southwest quadrant of I-75 and University Parkway, Sarasota, and generally shown on the map below:



Notice of County Commission Project Review

Date: Tuesday, July 8, 2025

Meeting begins at: 9:00 am

Location: Commission Chamber - Robert L. Anderson Administration Center,
4000 South Tamiami Trail, Venice, FL

This proposed project is not on Palmer Ranch but will impact Palmer Ranch residents if it comes to fruition.

Mid-County Public-Private Skatepark Proposal (East side of Honore Avenue, across from Scherer Thaxton Preserve)

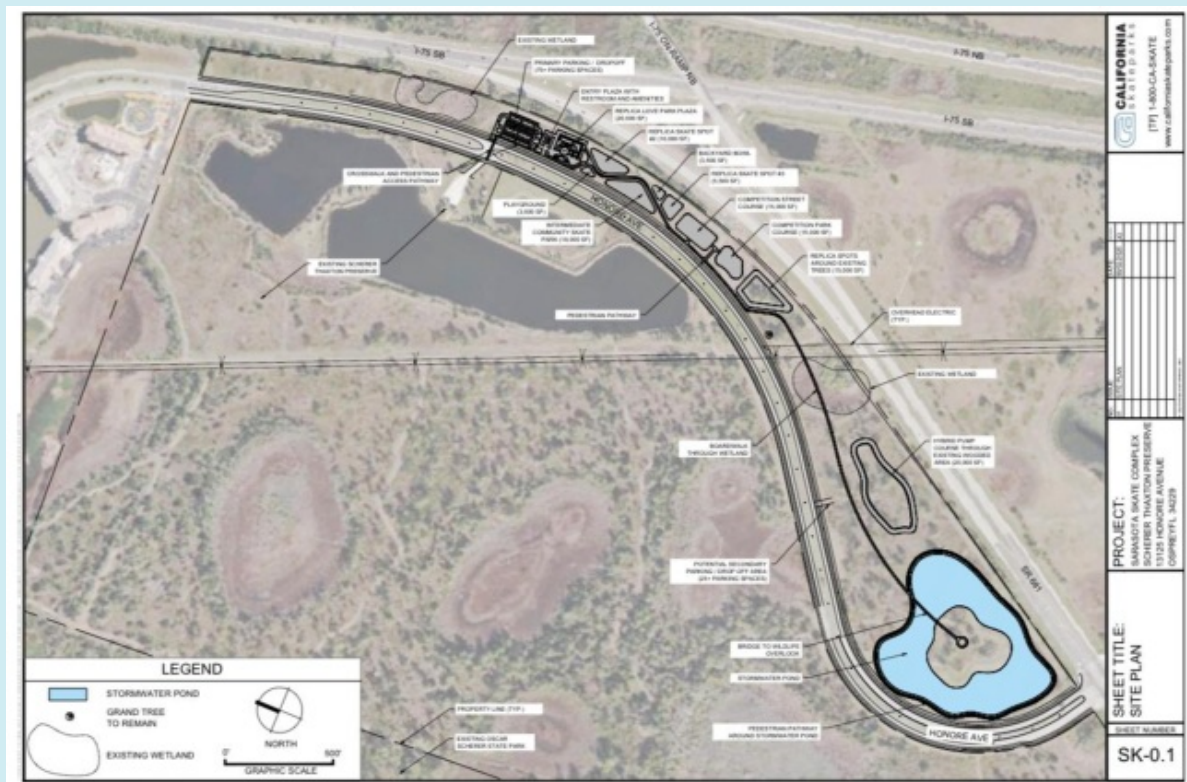
During their meeting on Tuesday, July 8th, the Board of County Commissioners will review a public-private skatepark proposal. Click [Here](#) for a link to the agenda. This proposal is item #53.

Click [Here](#) for a copy of the memorandum of the initiative. A draft concept plan image is listed below. Click [Here](#) or on plan photo to enlarge the plan.

While this is not a public hearing, County staff will be seeking direction from the County Commission on how County staff is to proceed.

If you would like to provide comment, or ask questions, contact Sarasota County at (941) 861-5000.

Skatepark Draft Concept Plan:



Sue's Grounds Corner



Florida Emergency Preparedness Association Grants Notice

Volunteer Florida is proud to administer funding opportunities for Florida's Community Emergency Response Team (CERT) Program in partnership with FEMA and the **Florida Division of Emergency Management (FDEM)**.

CERT is a training program that prepares Floridians to help their families and neighbors in the event of a disaster in their community. Through CERT, citizens can learn about disaster preparedness and receive training in basic disaster response skills such as fire safety, light search and rescue, and disaster medical operations.

With this training, Florida volunteers can provide critical support in their local communities by giving immediate assistance to survivors before emergency first responders arrive on scene. CERT volunteers also support the community year-round by participating in community preparedness outreach activities and distributing materials on disaster preparedness and education.

Click [Here](#) for link to notice of funding opportunity from Volunteer Florida.

For more information, please feel free to contact the Palmer Ranch Master Association Office.

Images From Our Palmer Ranch Members

This photo of the bumblebee was taken at the northwest corner of McIntosh Road and Palmer Ranch Parkway West, by Joe Myeress of Stoneybrook Estates.



Local Happenings



Artists of Palmer Ranch Monthly Meeting

If you draw, paint, sculpt, or simply have an interest in the visual arts, please join the *Artists of Palmer Ranch* at their next meeting on

Monday, July 7th at 10:30 am at Gulf Gate Library, 7112 Curtiss Ave., Sarasota.

Any Palmer Ranch resident is very welcome. If you like, bring your latest masterpiece! They'd love to see it!

Featured Artist: Jerry Blumengarten

Palmer Ranch Master Association Hours of Operation

Monday - Thursday: 8:00 am - 5:00 pm

Friday: 8:00 am - 4:30 pm



Would you like to submit an article for consideration in a future newsletter?

Click [Here](#) for our article submission guidelines and form.

Email completed form to: Info@palmerranch.net

Palmer Ranch Master Association Mission Statement

Our mission is to enhance and maintain the aesthetic quality of Palmer Ranch and to preserve the overall unique identity and sense of community.