



### Communication from the Master Association to our Members

#### Patriot Day - September 11th

Thursday, September 11, 2025, will mark the 24th anniversary of the terrorist attacks in New York, Pennsylvania, and Washington DC. It is a solemn occasion, and a chance to honor those who died and the heroes that emerged that day. It is customary to observe a moment of silence beginning at 8:46 am marking the time the first plane struck the North Tower of the World Trade Center on September 11, 2001. U.S. flags will be flown at half-staff from sunrise to sunset on September 11th.

---



#### Preserve Your Family Memories at the Memory Lab!



Sarasota County Libraries and Historical Resources recently launched a new Memory Lab at the Sarasota County History Center (337 N Tamiami Trail, Osprey).

This do-it-yourself digitization station allows you to convert VHS tapes, audio cassettes, print photos, negatives and many other older formats into digital files for long-term preservation and easier sharing!

Visit [SarasotaCountyLibraries.org](http://SarasotaCountyLibraries.org) and choose "Memory Lab" from the Services menu to learn more.

Questions? Contact the Sarasota County History Center by email at [historycenter@scgov.net](mailto:historycenter@scgov.net) or by phone at **941-861-6090**.

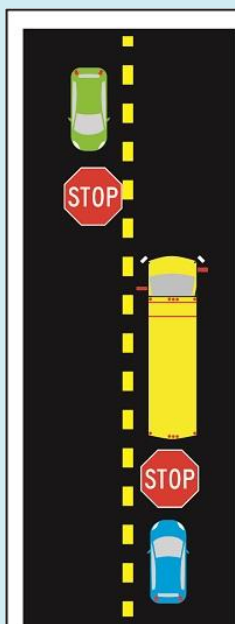


## School Bus Safety

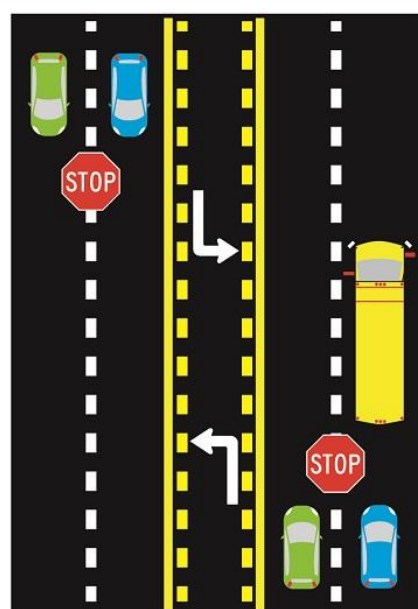
With our schools back in session and busses back on the streets, here are some safety reminders:

Motorists should always be alert and drive with caution around school buses and in school zones where children may be present like schools, bus stops, school buses and school parking lots. Parents should also go over safety tips with their children to make sure they are safe on and around school buses and school zones. Motorists are required to stop when approaching a school bus that is stopped with its red lights flashing and STOP arms extended.

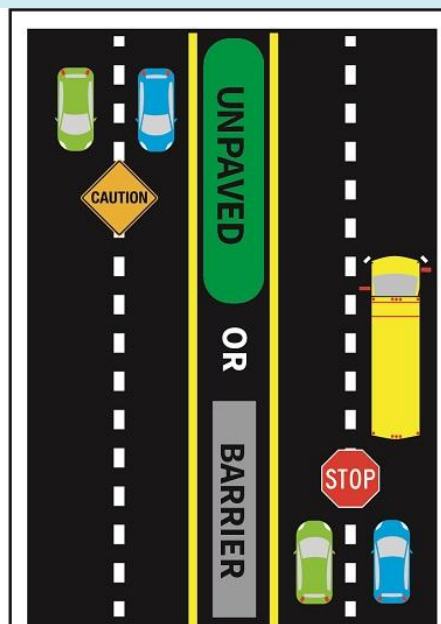
(See the different situations in the diagram below)



**TWO LANE**  
Vehicles traveling in both directions MUST stop.



**MULTI-LANE PAVED ACROSS**  
Vehicles traveling in both directions MUST stop.



**DIVIDED HIGHWAY**  
Unpaved space 5 ft+ / raised median / physical barrier.  
Vehicles behind bus MUST stop.  
Vehicles traveling in the opposite direction must proceed with caution.

- All drivers moving in either direction on a two-way street must stop for a school bus displaying a stop signal, and must remain stopped until the road is clear of children AND the school bus stop arm is withdrawn. (see diagram, TWO-LANE)
- On a highway divided by a paved median, all drivers moving in either direction must stop for a school bus displaying a stop signal, and must remain stopped until the road is clear of children AND the school bus stop arm is withdrawn. (see diagram, MULTI-LANE)
- The only time traffic approaching an oncoming school bus does not need to stop, is if there is a raised barrier such as a concrete divider or at least five feet of unpaved space separating the lanes of traffic. (see diagram, DIVIDED HIGHWAY)
- On a highway divided by a raised barrier or an unpaved median at least 5 feet wide, drivers moving in the opposite direction do not have to stop for the bus (painted lines or pavement markings are not considered barriers). However, these motorists should slow down and watch for students loading or unloading from the bus. (see diagram, DIVIDED HIGHWAY)

## Notice of Neighborhood Workshop

**Date:** Thursday, September 11, 2025

**Time:** 6:00 pm, or as soon thereafter as possible

**Location:** virtually, via Microsoft Teams

**This project is on Palmer Ranch**

### Notice of Neighborhood Workshop Request for Palmer Ranch Parcel 6C

Click [Here](#) to read the notice as listed on the Sarasota County website.

A virtual workshop will be held to discuss the following applications associated with the Palmer Ranch Parcel 6C property, generally located west of I-75, south of SR 681 and east of Honore Avenue, within the Palmer Ranch DRI: a Comprehensive Plan Amendment (CPA), an Application for Incremental Development Approval (AIDA) for Palmer Ranch Increment XXXI, rezoning the commercial portion to the CG (Commercial, General) zone district and balance to the RMF-2/PUD (Residential, Multi-family-2/Planned Unit Development) zone district, and a Special Exception.

To watch and participate in the virtual workshop at 6:00 pm on September 11, 2025, please visit:

<https://bit.ly/PR6C-NHW2> (Note: This URL is case-sensitive).

You can also listen in by phone by dialing (833) 436-6264, Conference ID: 864 625 82#

This is not a public hearing. The purpose of the meeting is to inform neighboring residents of the nature of the proposal, discuss the concept plan, and to seek comments.

If you have questions, please contact Jim Paulmann or Matt Lewis at 941-907-6900 or by email at [jim.paulmann@stantec.com](mailto:jim.paulmann@stantec.com) or [matt.lewis@stantec.com](mailto:matt.lewis@stantec.com).



## Interview with Mike Nepi, CERT Lead for Esplanade CERT

Click [Here](#) to read the informative Questions and Answers from the interview with Mike Nepi.

### Attention those needing the Skills Sessions to complete their CERT Basic Training Course:

The Grand Palm CERT will be hosting two Skills Sessions from **8:30 am to 5:00 pm** on **Saturday, October 4th** and **Sunday, October 5th**. The sessions will be held at the Grand Palm community off River Road in North Port. The physical address, directions, and other course information will be provided with registration confirmation.

To register for these sessions, please send a copy of your Certificate of Completion of the online course to Registrar Anne Petera at [annepetera@gmail.com](mailto:annepetera@gmail.com) with your contact information.

Thank you for your continuing interest in additional CERT training to better support the CERT program in Sarasota communities.

Haven't taken the online course yet? Click [Here](#) for instructions to start the process. Questions, concerns, comments? Standing-by to assist.

Yours in community service,

Mike Nepi  
Secretary, SRQ CERT Consortium  
703-915-8560  
[esplanadecertcommander@gmail.com](mailto:esplanadecertcommander@gmail.com)

---

### What is a Restoration Area?

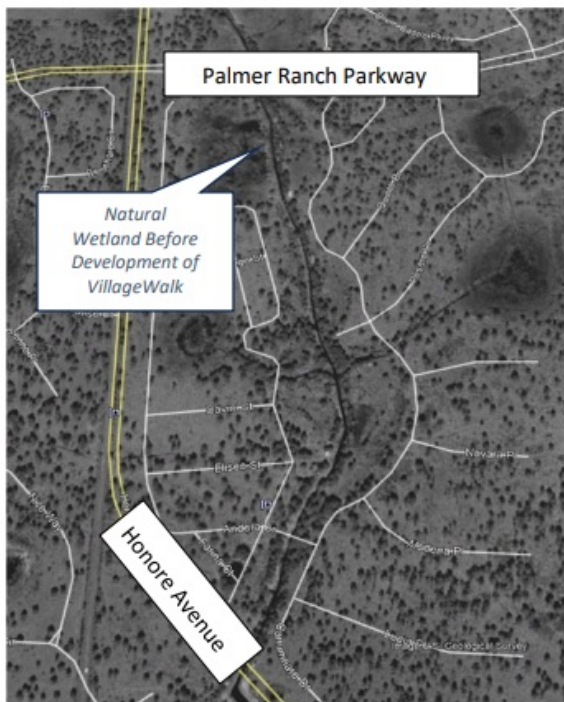
Some of you have asked why does Palmer Ranch Master Association call certain areas of the ranch Restoration Areas?

Restoration Areas are basically areas of waterway easements that have been improved and enhanced to move water away from the community you live in and send it downstream to the next Restoration Area before eventually entering Sarasota Bay.

When your community was being developed, all the ponds were outfitted with structures that were piped so that overflow would go from one pond to the next and then to the Restoration Area for major water movement. For instance, all the ponds in Village Walk are piped so that one pond flows into the next and then eventually into Restoration Area "F", aka South Creek. From there it goes into Restoration Area "E" that runs parallel to Honore along the Turtle Rock buffer and so on.

The Restoration Areas were ecologically redesigned to bring back the wildlife and plant life that was disturbed by development. There are more Restoration Areas on the east side of Palmer Ranch because at one time all that land was all cattle pasture and under water most of the year. The Restoration Areas on the west side of Palmer Ranch are few and far between mostly because Catfish Creek had already been in existence and all the developments were basically built alongside the creek, so drainage and swales were incorporated into the development design.

There are a total of nine Restoration Areas on Palmer Ranch, eight of which are on the east side and one on the west side

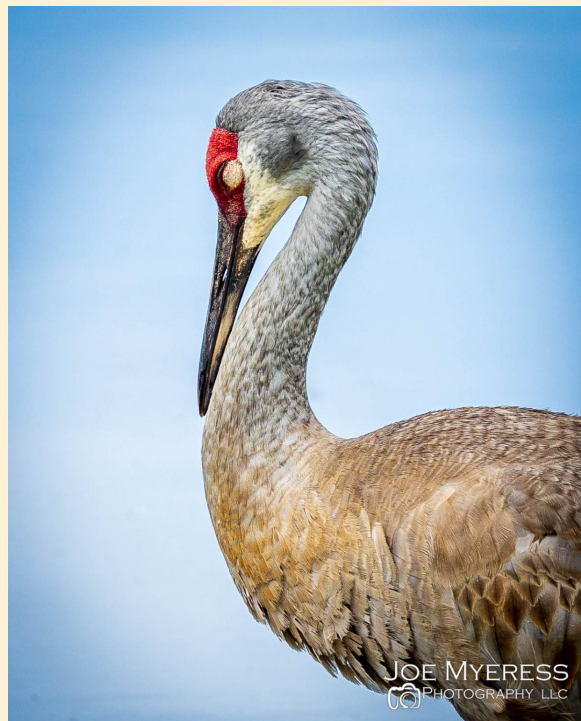


## Images From Our Palmer Ranch Members



Here are some images of Palmer Ranch wildlife taken by Palmer Ranch resident and professional photographer Joe Myeress.



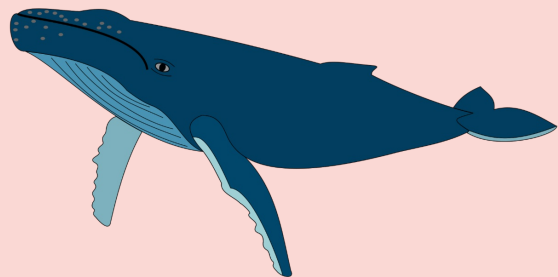


## Local Happenings

### Glenridge of Palmer Ranch Presentation Whales in the Gulf

The members of the Green Team at The Glenridge on Palmer Ranch invite you to join them on **Tuesday, September 9th at 10:30 am** in the Glenridge Theatre, located at 7333 Scotland Way, for a free Zoom presentation by Lynsey Wilcox Talbot, a research geneticist at the National Oceanic and Atmospheric Administration (NOAA).

Lynsey will discuss her latest findings related to "Whales in the Gulf." There will be time for audience questions after the presentation.



Attendance is free and open to the public, but attendees are asked to call **941-552-5325** for reservations.

Glenridge gate security will provide visitors with directions to parking and to the theatre.

For additional information, please visit the Green Team website at [www.glenridgegreenteam.org](http://www.glenridgegreenteam.org).

---

### **Artists of Palmer Ranch Monthly Meeting**

If you draw, paint, sculpt, or simply have an interest in the visual arts, please join the *Artists of Palmer Ranch* at their next meeting on **Monday, September 8th at 10:30 am** at Gulf Gate Library, 7112 Curtiss Ave., Sarasota.

Any Palmer Ranch resident is very welcome.  
If you like, bring your latest masterpiece! They'd love to see it!

**Featured Artist:**  
Margaret Swedzikowski  
**Title:** Leaping Orb  
**Medium:** Acrylic, 12x24



### **You are Invited to an Art Show**

Artists of Palmer Ranch members will be exhibiting at the Art Advocates Gallery on **Saturday, September 6th from 2-4 pm** and **Saturday, October 4th from 2-4 pm**. Click [Here](#) or on the flyer below for more information.



## The Artists of Palmer Ranch Arts Advocates Gallery

Join us for an afternoon of visual enchantment as the Art Advocates Gallery welcomes the Artists of Palmer Ranch. Engage with these talented artists and immerse yourself in a diverse array of media and captivating images.

**FaceBook link: Artists of Palmer Ranch**

**Two "Meet the Artists" Receptions:  
Sat September 6 & Sat October 4, 2pm - 4pm**

**Artists will be  
at the gallery  
every Saturday in  
Sept & Oct  
From 2 - 4pm**

Come see our art and ask  
the Artists questions!

**Located inside The  
Crossings at Siesta Key Mall  
3501 S. Tamiami Trail  
Suite 119**

Enter the mall through the doors  
next to Connors Steak &  
Seafood and turn left.



### **Palmer Ranch Singers are Calling all Singers!**

If you love to sing and have experience in a choir or chorus, you are invited to join the Palmer Ranch Singers as they prepare for their Fall 2025 concert.

They are a welcoming, friendly group which comes together to sing, to grow musically, and to share the joy of beautiful music with the community. Plus – they make new friends and have fun! They have a special need for tenors, so if you're out there, they'd love to have you join their happy group!

Artistic Director, Jane Hunder, and the Leadership Team have prepared a wonderful holiday program, and are looking forward to the group's return to singing after the summer hiatus. They welcome their new Musical Director, Wayne Fisher, to the Singers' family.

Rehearsals begin on **Monday, October 6th** at St. Andrew United Church of Christ, 6908 Beneva Road. Practices are weekly **1:15 – 3:30 pm**, culminating in a holiday concert on **December 7th**.

Dues are \$50 for the Fall term. Music packets are distributed on the first day of practice; to make sure they have adequate materials for everyone, please let them know if you're interested in joining.

The Singers are excited that they are now a 501(c)3. Donations are tax deductible, and may be sent to Palmer Ranch Singers, PO Box 52013, Sarasota, FL, 34232. Patronage is always welcomed and appreciated. Resources from member dues, donations, and concert sales support the professional director and musicians, music purchases, and use of the venue.

Check out the Singers' website at [palmerranchsingers.com](http://palmerranchsingers.com).

For further information and to register, contact Jane Hunder, Artistic Director, at [hunderjane@gmail.com](mailto:hunderjane@gmail.com) or Peggy Wells, President, at [pf58md@gmail.com](mailto:pf58md@gmail.com).

## **Palmer Ranch Master Association**

### **Hours of Operation**

Monday - Thursday: 8:00 am - 5:00 pm

Friday: 8:00 am - 4:30 pm



Would you like to submit an article for consideration in a future newsletter?

Click [Here](#) for our article submission guidelines and form.

Email completed form to: [Info@palmerranch.net](mailto:Info@palmerranch.net)

### **Palmer Ranch Master Association Mission Statement**

*Our mission is to enhance and maintain the aesthetic quality of Palmer Ranch and to preserve the overall unique identity and sense of community.*

Palmer Ranch Master Property Owners Association, Inc. | 5589 Marquesas Cir., Ste. 201  
| Sarasota, FL 34233 US